

Livestock

Dairy Cow Parts

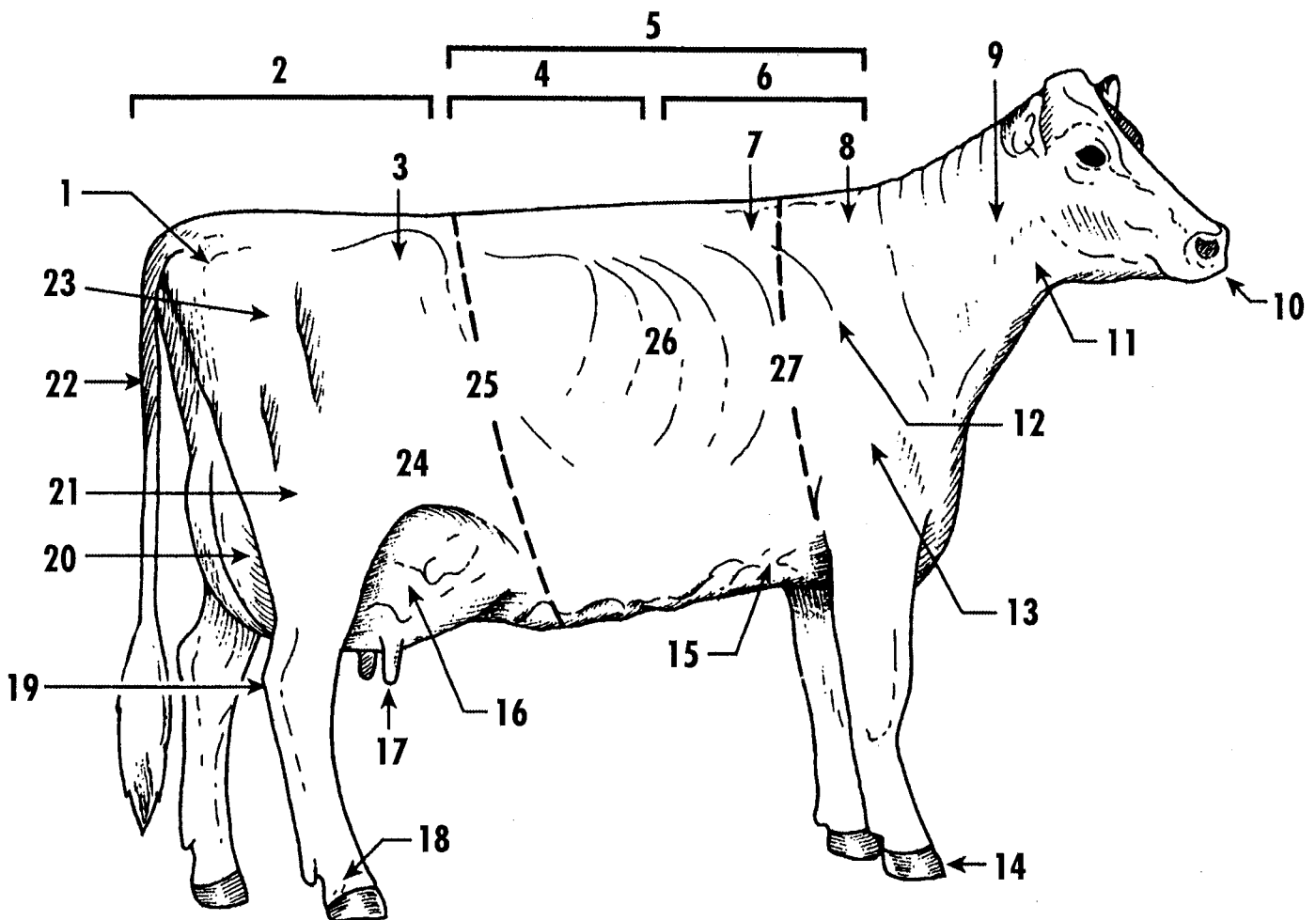
Activity level: Beginners or members ages 9 to 11

Write in the number that corresponds to the correct part of the animal.

Identification—Key

In this activity you will:

- learn the parts of a dairy cow.



<u>1</u> pin bone	<u>8</u> withers	<u>2</u> rump	<u>22</u> tail
<u>18</u> pastern	<u>19</u> hock	<u>16</u> fore udder	<u>3</u> hip
<u>5</u> back	<u>20</u> rear udder	<u>7</u> crops	<u>24</u> stifle
<u>4</u> loin	<u>27</u> heart girth	<u>5</u> chest floor	<u>11</u> throat
<u>6</u> chine	<u>12</u> shoulder blade	<u>9</u> neck	<u>26</u> ribs
<u>23</u> thurl	<u>13</u> point of shoulder	<u>10</u> muzzle	<u>25</u> barrel
<u>7</u> teat	<u>14</u> hoof	<u>21</u> thigh	

Reference: The Dairy Livestock Learning Laboratory Kit
Prepared By: Andrea Auker, Animal Sciences Student